

# OWNER'S MANUAL

MODEL NO.'s  
ATVK-350  
thru  
ATVK-430

## **⚠ CAUTION**

For Safe Operation  
Read Rules And  
Instructions Carefully

SINO LEEINGLES, PIDA AYUDA  
A AIGUIEN QUE SI LO LEA  
PARA QUE LE TRADUZCA LAS  
MEDIDAS DE SEGURIDAD.



## STATEMENT OF POLICY

It is the policy of **Worksaver, Inc.** to improve its products where it is possible and practical to do so. **Worksaver, Inc.** reserves the right to make changes or improvements in design and construction at any time, without incurring the obligation to make these changes on previously manufactured units.

# ATV Broadcast Seeder - Spreader

Safety Instructions  
Tractor Preparation  
Operating Instructions

Assembly & Mounting  
Maintenance  
Repair Parts

## **⚠ ATTENTION! SAFETY RULES**

1. Read instruction manual and make sure all operators are knowledgeable on correct operation of equipment and familiar with the Safety Rules of Operation.
2. Never allow riders on equipment.
3. When operating on rough or uneven terrain, use extreme caution and a safe operating speed.
4. When spreading seed or fertilizer, always use safety goggles.
5. Never operate equipment when anyone is within 50 feet of seeder/spreader.

Before operating equipment – If you have any questions regarding the proper assembly or operation, contact your dealer or representative.

# INSTRUCTIONS (continued)

Ken

## NOTE:

- ★ Since there is no agitator in the seed hopper, these materials will bridge at narrow seed gate settings and cause erratic seeding rates. If bridging occurs at wider seed gate settings, cleaning the seed or blending with a small dense seed such as clover may help. A mix of dry sand with the seed (50/50 mix) can sometimes solve the problem.

## OPERATIONAL SPREADING CHART (Calibrated at 4 MPH ground speed)

Material	Spread Width In Feet	Approx. Pounds Per Acre For Setting As Indicated					
		1/4	3/8	1/2	3/4	1	1-1/2
Alfalfa, Red Clover	30	8	12	16	24	32	48
Barley, Wheat, Rye	35	30	45	60	90	120	180
Sweet or Crimson Clover	30	8	12	16	24	32	48
Kentucky Blue or Bermuda Grass ★	15	7	11	14	21	28	
Lespedeza	30		15	20	30	40	60
Oats ★	35		19	25	37	50	75
Timothy	20	10	15	20	30	40	60
Sudan Grass ★	30		15	20	30	40	60
Fertilizer: Pellet or Granule	38	25	37½	50	75	100	150

The spread width indicated on this chart is possible if spinner is operated 30 inches above the ground. Seeder should be level or tilted forward slightly.

## NOTE:

Spread Chart settings are approximate – always make trial run to check actual application rate.

The amount of seed or fertilizer broadcast depends on the size of the hopper opening and the speed of the vehicle. The table shown is an approximate guide based on a forward speed of 4 MPH, so adjust for different speeds. A forward speed of 8 mph will cut above rates by one half. A speed of 6 mph will change rates by 75%.

## HELPFUL TROUBLE-SHOOTING TIPS

### 1. Not feeding even –

- A. Seed gate opening may be set too close for the material being spread. To overcome, set the opening larger and driver faster to obtain same spread rate.
- B. Check material for foreign matter or lumps.

### 2. Poor spread –

- A. Spreader fan speed too slow (under 520 rpm) will result in a narrow spread.
- B. Bent or broken fan blades.

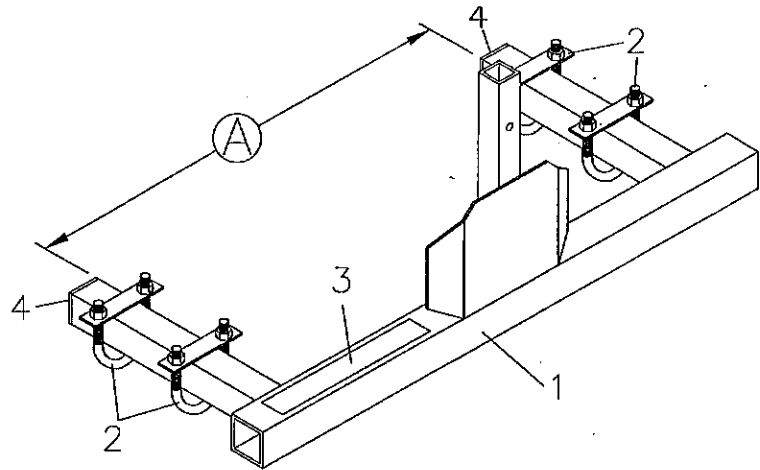
C. Set screw loose or missing on fan hub.

D. Too windy for material being spread.

E. Operator not spacing spread runs properly for correct overlap.

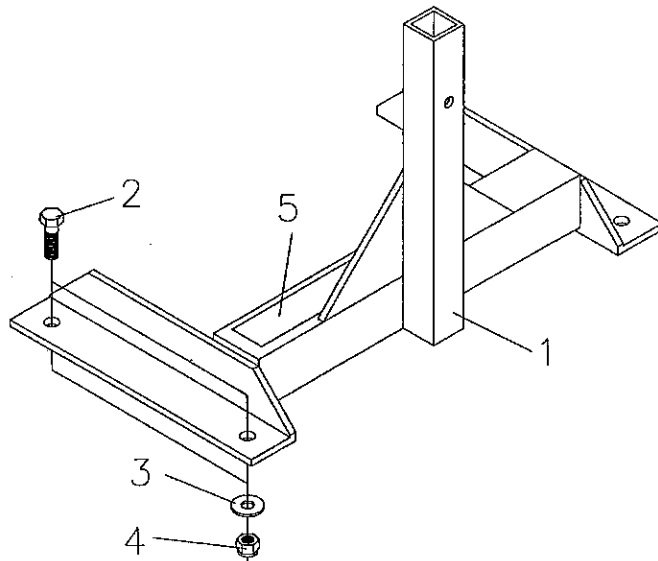
For best results, cover area twice over at one-half recommended material usage rate, the second time over to run halfway between first spreading width or in a criss-cross pattern. This method allows the most complete and even coverage, as well as to give operator a chance to adjust gate setting to compensate for too thin or too heavy a covering the first time over.

# ATVK-350, 370, 410, 420, 430 MOUNTING KITS PARTS LIST



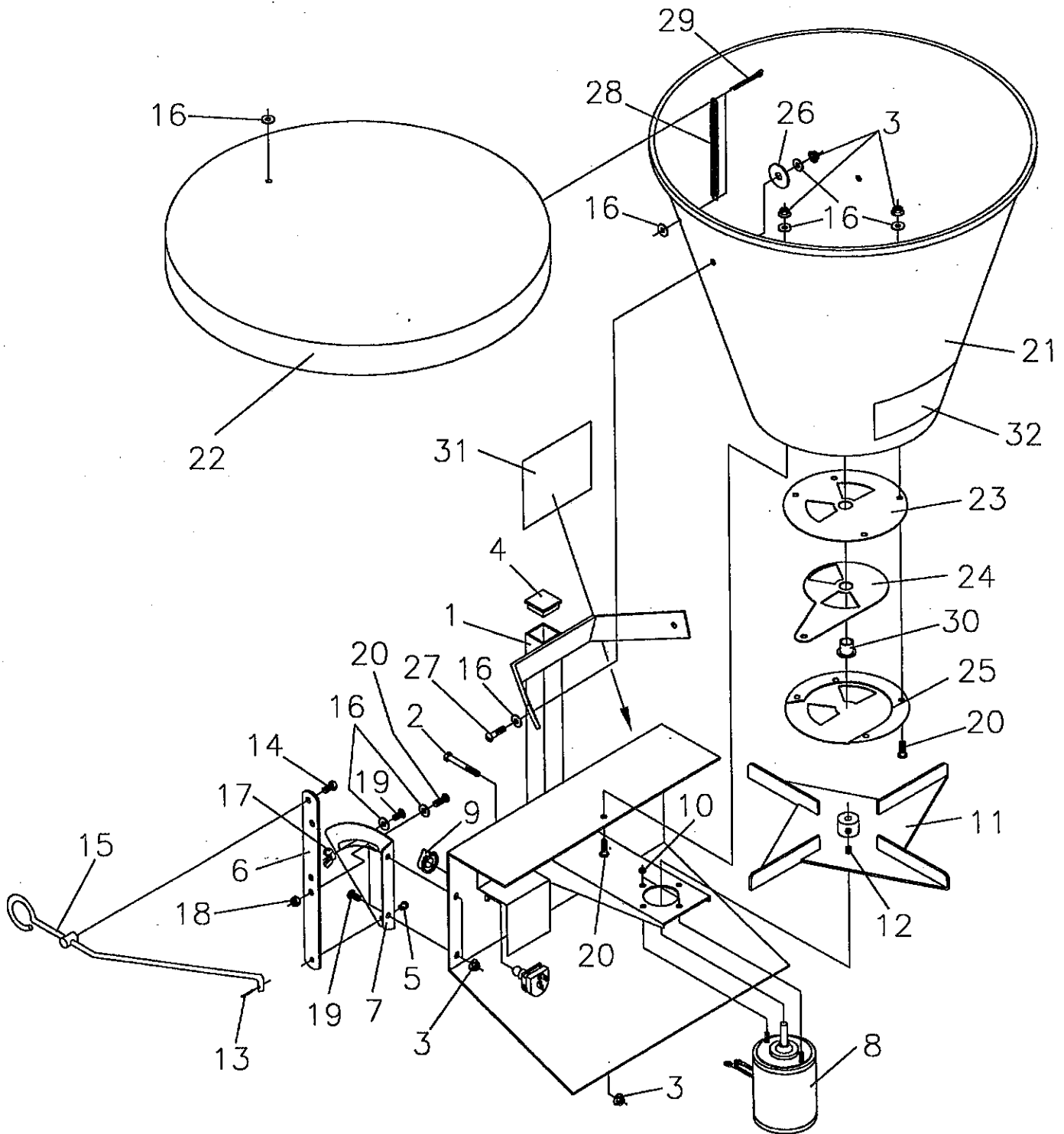
Ref. No.	Part No.	Description	No. Req'd.
1	402983	ATVK-350 Mount Weldment (A=23 1/4")	1
	402987	ATVK-370 Mount Weldment (A=25 1/4")	1
	402991	ATVK-410 Mount Weldment (A=14 3/4")	1
	402995	ATVK-420 Mount Weldment (A=10 7/8")	1
	402997	ATVK-430 Mount Weldment (A=20")	1
2	2504205	U-Bolt 5/16" x 2" x 3 1/4" w/Plate & Nuts	4
3	101030	Safety Sign - Warning (ATV's)	1
4	2400038	Cap Plug, Plastic 1 1/4"	2

# ATVK-390 MOUNTING KITS PARTS LIST



Ref. No.	Part No.	Description	No. Req'd.
1	402971	ATVK-390 Mount Weldment	1
2	2503038	Bolt 5/16"-18NC x 1" Hex Head	4
3	2501012	Washer 5/16" Flat	4
4	2500046	Nut 5/16"-18NC Hex Nylock	4
5	101030	Safety Sign - Warning (ATV's)	1

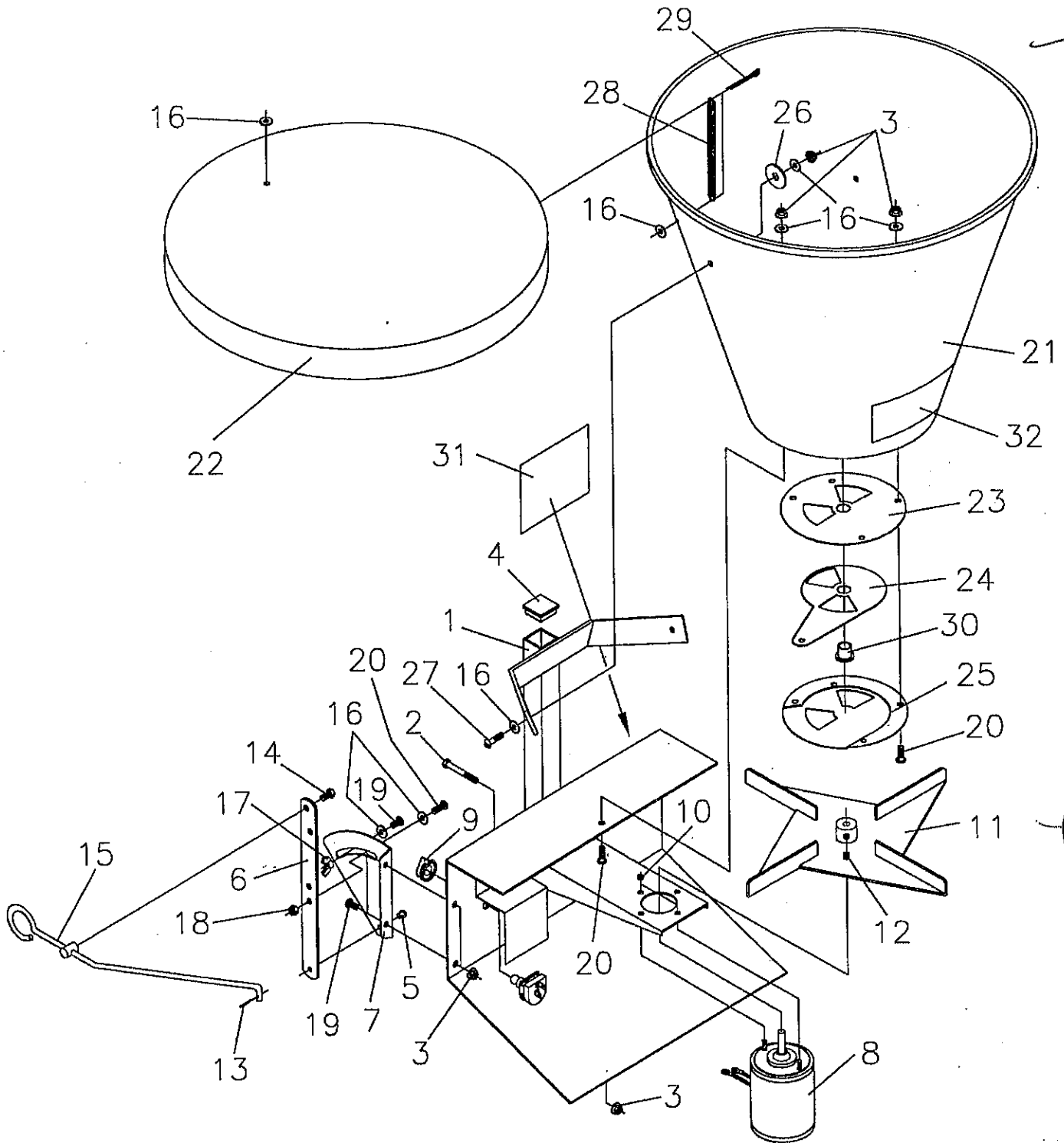
# ATV BROADCAST SEEDER-SPREADER PARTS DRAWING



# ATV BROADCAST SEEDER-SPREADER PARTS LIST

Ref. No.	Part No.	Description	No. Req'd.
1	402060	Main Frame Weldment (ATVS-100)	1
2	2503104	Bolt 1/4"-20NC x 2" Hex Head	1
3	2500008	Nut 1/4"-20NC Whiz Flange Hex	10
4	2400038	Cap Plug, Plastic 1 1/4"	1
	402019	Scale Plate & Lever Assembly (#5 thru #7)	1
5	2504019	Rivet, Button Head 3/16" x 1/4"	1
6	3450009	Lever, Scale	1
7	402020	Scale Plate	1
8	2401026	Motor 12V DC	1
9	2401014	Switch, Rheostat 12 V	1
	*Wiring Package consists of the following:		
NS	2401013	*Terminal, Spade 14 Ga. Wire	4
NS	2401010	*Connector, Butt #14 Wire	1
NS	2401011	*Clamp, Battery (Alligator)	2
NS	402024	*Wire 14 Ga. x 3 1/2 Ft. Long	1
NS	402025	*Wire 14 Ga. x 6 Ft. Long	1
10	2500005	Nut #8-32NC Hex	2
11	<del>480321</del>	Fan, <del>Cast Aluminum</del> 403421 PLASTIC	1
12	2503042	Set Screw 5/16"-18NC x 5/16"	2
13	2504010	Pin, Cotter 3/32" x 1/2"	1
14	2503027	Bolt 1/4"-28NF x 1/2" Hex Head	1
15	402021	Control Rod & Pin Assembly	1
16	2501006	Washer 1/4" Flat	13
17	2500007	Nut 1/4"-20NC Wing	1
18	2500006	Nut 1/4"-20NC Hex Nylock	1
19	2503008	Bolt 1/4"-20NC x 1/2" Round Head	3
20	2503014	Bolt 1/4"-20NC x 3/4" Round Head	6
21	2401004	Hopper (1 Bushel)	1
22	2401005	Lid, Hopper (1 Bushel)	1
23	402050	Seed Plate Support	1
24	3450008	Middle Plate	1
25	420510	Lower Plate	1
26	2501011	Washer 3/8" Fender	2
27	2503009	Bolt 1/4"-20NC x 1" Round Head	2
28	403305	Spring, Extension	1
29	2504015	Pin, Cotter 1/8" x 1 1/2"	2
30	2505003	Bearing, Flanged Bronze 1/2" ID	1
31	101011	Safety Sign - Spread Chart	1
32	101022	Safety Sign - Warning (Spinner)	1

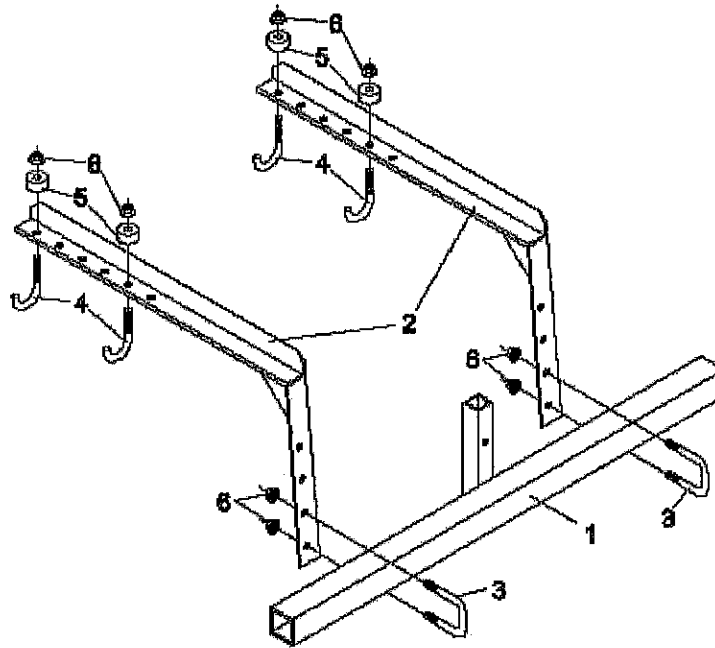
# ATV BROADCAST SEEDER-SPREADER PARTS DRAWING



- Home
- Product Line ▶
- Information ▶
- Dist./Dealer Search



## ATVK-400 Seeder Mounting Kit



Ref. No	Part No.	Description	No. Req'd
1	403426	Seeder Mount Weldment (ATVK-400)	1
2	403431	Support Leg Weldment	2
3	2503323	U-Bolt, 5/16"-18NC 1-1/2"	2
4	2503324	J-Bolt, 5/16"-18NC 1-1/8" x 2-1/2"	4
5	403428	Spacer	4
6	2500060	Nut, 5/16"-18NC Whiz Flange Hex	8
NS	101030	Safety Sign - Warning (Not in Use - Remove)	1

**NOTICE:** Worksaver Inc. has a corporate policy of continuous product improvement and development; Therefore, specifications are subject to change without any advance notice. Worksaver Inc. is not responsible for differences between specifications or illustrations contained in this site and the actual equipment.

To report problems or ask questions concerning Worksaver's web site, please contact the [Webmaster](#).

Copyright © 1996-1999 Worksaver, Inc. All Rights Reserved. [Legal Notices](#)

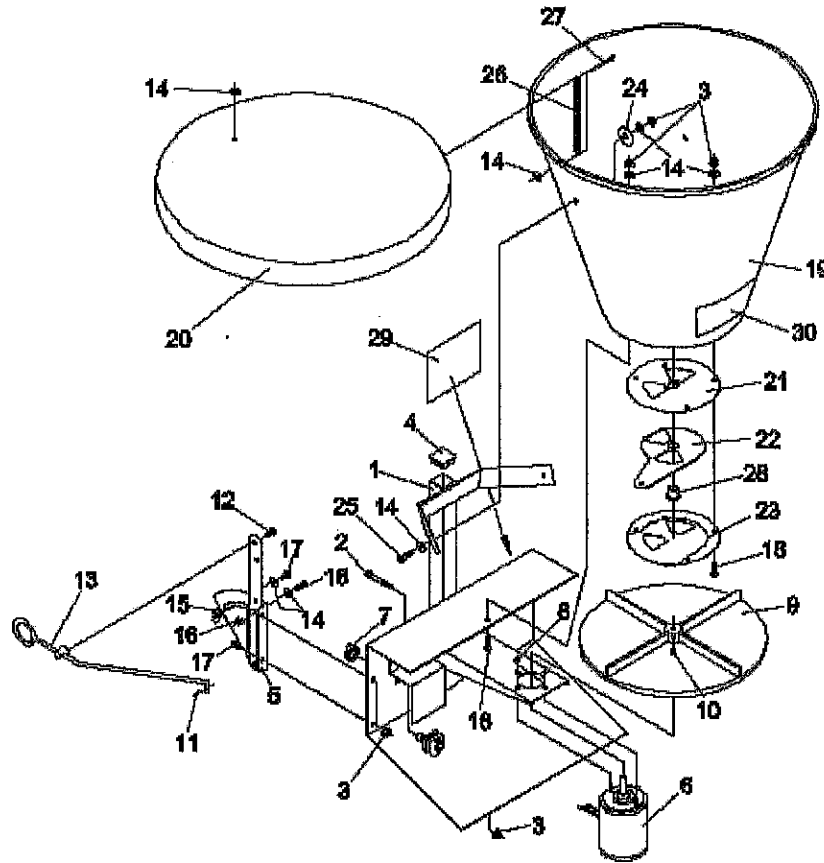
This document was last modified on

- Home
- Product Line ▶
- Information ▶
- Dist./Dealer Search



## ATVK-400

### Broadcast Seeder / Spreader



Ref. No	Part No.	Description	No. Req'd
1	402060	Main Frame Weldment (ATVK-400)	1
2	2503104	Bolt, 1/4"-20NC x 2" Hex Head	1
3	2500008	Nut, 1/4"-20NC Whiz Flange Hex	10
4	2400038	Cap Plug, Plastic 1-1/4"	1
5	402017	Scale Plate & Lever Assembly	1
	402023	* Motor, Fan & Wiring Assembly	1
6	2401026	* Motor, 12V DC	1
7	2401014	* Switch, Rheostat 12V	1
NS	2401013	* Terminal, Spade 14 Ga. Wire	4
NS	2401010	* Connector, Butt #14 Wire	1
NS	2401011	* Clamp, Battery (Alligator)	2
NS	402024	* Wire, 14 Ga. x 3-1/2 Ft. Long	1



NS	402025	* Wire, 14 Ga. x 6 Ft. Long	1
8	2500005	* Nut, #8-32NC Hex	2
9	403421	* Fan, Plastic (Replaces Cast Aluminum Fan)	1
10	2503042	Set Screw, 5/16"-18NC x 5/16"	2
11	2504010	Pin, Cotter 3/32" x 1/2"	1
12	2503027	Bolt, 1/4"-28NF x 1/2" Hex Head	1
13	402021	Control Rod & Pin Assembly	1
14	2501006	Washer, 1/4" Flat	13
15	2500007	Nut, 1/4"-20NC Wing	1
16	2500006	Nut, 1/4"-20NC Hex Nylock	1
17	2503008	Bolt, 1/4"-20NC x 1/2" Round Head	3
18	2503014	Bolt, 1/4"-20NC x 3/4" Round Head	6
	402026	Hopper Assembly, (Includes Items #19 thur #28; also includes [7] #3's, [11] #14's, & [5] #18's)	1
19	2401004	Hopper (1 Bushel) & Lid	1
20	2401005	Lid, Hopper (1 Bushel)Only	1
21	402050	Seed Plate Support	1
22	3450008	Middle Plate	1
23	420510	Lower Plate	1
24	2501017	Washer, 3/8" Fender	2
25	2503009	Bolt, 1/4"-20NC x 1" Round Head	2
26	403305	Spring, Extension	1
27	2504015	Pin, Cotter 1/8" x 1-1/2"	2
28	2505003	Bearing, Flanged Bronze 1/2" ID	1
29	101011	Safety Sign - Spread Chart	1
30	101022	Safety Sign - Warning (Spinner)	1

**NOTICE:** Worksaver Inc. has a corporate policy of continuous product improvement and development; Therefore, specifications are subject to change without any advance notice. Worksaver Inc. is not responsible for differences between specifications or illustrations contained in this site and the actual equipment.

To report problems or ask questions concerning Worksaver's web site, please contact the [Webmaster](#).

Copyright © 1996-1999 Worksaver, Inc. All Rights Reserved. [Legal Notices](#)

This document was last modified on